



# MONTHLY MEMBERSHIP PROGRESS REPORT

District 2 X3

Results as of: 04/30/2018

GMT: JOE AL PICONE

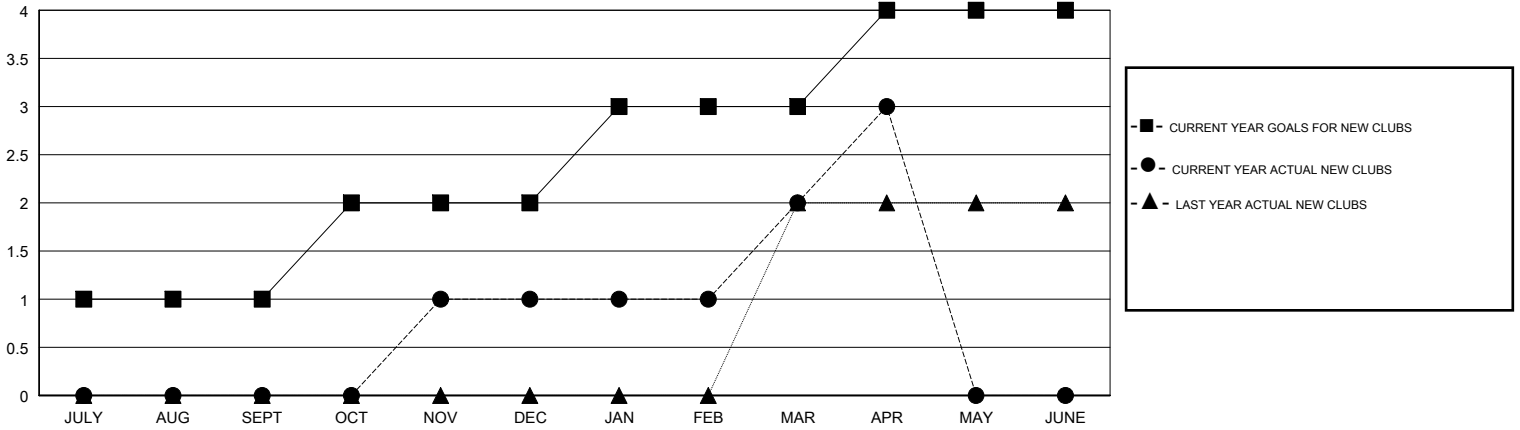
LOCATION TEXAS

GMT CA

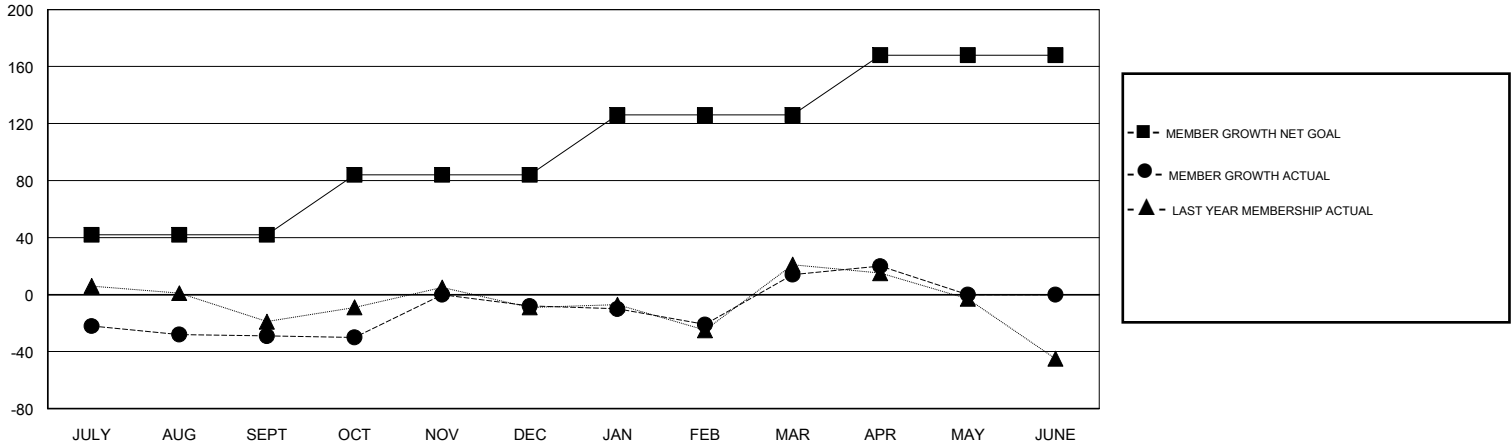
| Clubs                 |               |           |               |
|-----------------------|---------------|-----------|---------------|
| RESULTS FOR 2017-2018 |               |           |               |
| QUARTER               | NEW CLUB GOAL | NEW CLUBS | DROPPED CLUBS |
| JULY/AUG/SEPT         | 1             | 0         | 3             |
| OCT/NOV/DEC           | 1             | 1         | 0             |
| JAN/FEB/MAR           | 1             | 1         | 0             |
| APR/MAY/JUNE          | 1             | 1         | 0             |

| Members               |                        |                      |  |
|-----------------------|------------------------|----------------------|--|
| RESULTS FOR 2017-2018 |                        |                      |  |
| QUARTER               | MEMBER GROWTH NET GOAL | MEMBER GROWTH ACTUAL | DROPPED MEMBERS ACTUAL (including transfers) |
| JULY/AUG/SEPT         | 42                     | 37                   | 58   |
| OCT/NOV/DEC           | 42                     | 75                   | 54   |
| JAN/FEB/MAR           | 42                     | 92                   | 67   |
| APR/MAY/JUNE          | 42                     | 43                   | 36   |

GOALS AND ACTUAL NEW CLUBS CUMULATIVE



GOALS AND ACTUAL MEMBERS CUMULATIVE



DROPPED CLUBS: 3

39 CLUBS OF 58 ADDED 1 OR MORE NEW MEMBERS

GENDER DISTRIBUTION  
 MALE 1,011 (64.97%)  
 FEMALE 545 (35.03%)  
 Women Percentage Fiscal Year Goal: 40%

| DROPPED MEMBERS |            |
|-----------------|------------|
| DECEASED        | 18         |
| CLUB CANCELLED  | 0          |
| OTHER           | 197        |
| <b>TOTAL</b>    | <b>215</b> |

[CLICK HERE FOR CUMULATIVE MEMBERSHIP DATA](#)

|                                 |     |
|---------------------------------|-----|
| TOTAL FAMILY UNIT MEMBERS       | 203 |
| FAMILY MEMBERS PAYING HALF DUES | 102 |